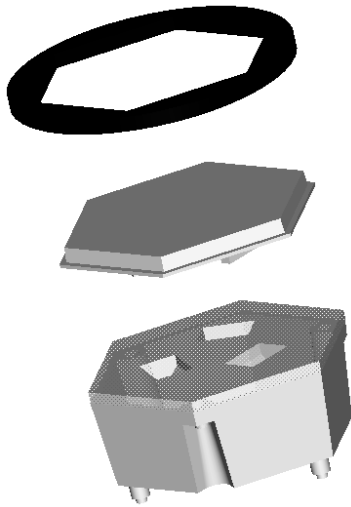


Bezel for POL Colour Mixer Optic - Part No. 164



- Designed for POL 157, 158 and 181 Colour Mixer optic products
- Precision moulded in high quality Polycarbonate for thermal stability and system durability
- Part of the Polymer Optics “Modular LED Optics”® range

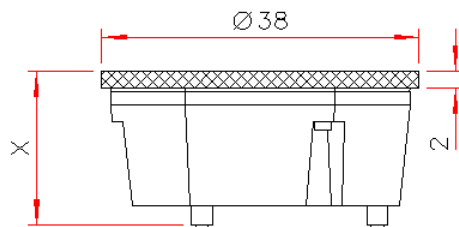
The POL 164 Bezel for POL Colour Mixer Optics has to be used with any of the POL Beam Converter Optics (160, 161, 162, 162B or 163 which are assembled by press fitting onto the front of the Colour Mixer Optic. The bezel then simply pushes onto the front of the assembled Beam Converter Optic, to convert the outer profile of the optical assembly to a circular format and enable it to be mounted into a standard 50mm fitting.

The POL 164 Bezel fits closely to the edge of the Colour Mixer Assembly optic without obscuring the out put beam.

The POL 164 Bezel can provide a simple way to retain the POL Colour Mixer based light engine assembly in the luminaire and prevent dust ingress.

The POL 164 Bezel provides an aesthetic contrast between the illuminated optic aperture and the luminaire body and prevents light bleed from within the luminaire.

The POL 164 Bezel is supplied in black as standard, but can be supplied in alternative colours to special order. Please contact POL or its distributors to enquire about this.



Typical dimensional tolerances to +/-0.2mm

Dimension X –

157 Assembly = 18mm

158 Assembly = 17mm

181 Assembly = 15.85mm

Due to continuous product improvement, POL reserve the right to change specifications without notice.

© Copyright Polymer Optics Limited 2016